

Exam Structure

The Debut Ukulele Grade exam has several sections, each covering a valuable aspect of musicianship. The following pages will give you a clear and concise view of what is involved and what must be practised before taking your exam. To be ready for the exam, make sure that you are comfortable with the following:

- Performance Songs:** Three pre-selected songs from the book with a backing track.
- Technical Exercises - Scales:** C Major and A Natural Minor scales, played ascending and descending.
- Technical Exercises - Chords:** A selection from five chords, picked by your examiner.
- Technical Exercises - Arpeggios:** C Major and A Minor arpeggios, played ascending and descending.
- Sight Reading:** A short 4 bar passage, reading open strings.
- Listening Skills - Melodic Recall:** Pitch recognition.
- Listening Skills - Harmonic Recall:** Chord recognition.
- General Musicianship:** Four general musicianship questions, chosen by your examiner.

Some of the above may seem difficult at first, but by learning from this book you will gain all of the knowledge needed to be able to complete the exam. Take your time and practise, practise, practise!

For more information about each of the sections mentioned above, please continue reading from page 29.

Marking Scheme

The exam is scored out of a total of 100 marks, see below for a clear breakdown:

MODULE		MARKS	TOTAL (100)
Performance Songs	Life Is Beachy	20	60
	Since Uke Been Gone	20	
	Hot Sauce	20	
Technical Exercises	Scales	8	20
	Chords	8	
	Arpeggios	4	
Listening Skills	Melodic Recall	4	8
	Harmonic Recall	4	
Sight Reading	4 bar sequence	8	8
General Musicianship	4 questions	4	4

Once the examiner has scored each section of the exam a percentage will be worked out, here is a breakdown and the pass marks needed:

Void	Fail	Pass	Merit	Distinction
0%	49% or less	50%-70%	71%-84%	85%-100%

Performance Songs

In your exam, you will need to prepare the pieces presented below. Please note that these pieces can be found in the Level 3 section of this book:

- Song 1:** Life Is Beachy (Level 3)
- Song 2:** Since Uke Been Gone (Level 3)
- Song 3:** Hot Sauce (Level 3)

Each song must be performed with their matching backing track. Please note that the correct backing will not have a Ukulele accompanying the song:

- Life Is Beachy:** Track 56
- Since Uke Been Gone:** Track 60
- Hot Sauce:** Track 62

Technical Exercises

EXAM

The examiner will ask you to play a selection from the technical exercises below, including scales, chords and arpeggios.

Scales

Track 66: Backing Track

Both scales below are to be played with the drum backing track, which has a tempo of 70bpm. A count in will be heard before the scale is to be played. Scales do not need to be memorised for the exam and the book can be used for reference (but it is always best practice to memorise!).

C Major Scale

♩ = 70

T
A
B

A Natural Minor Scale

♩ = 70

T
A
B

Chords

Chords are to be strummed once and will be chosen at the examiner's discretion. Chords do not need to be memorised for the exam and the book can be used for reference (but it is always best practice to memorise!).

C Am F Dm G

T
A
B

Arpeggios

Both arpeggios below are to be played with the drum backing track, which has a tempo of 70bpm. A count in will be heard before the arpeggio is to be played. Arpeggios do not need to be memorised for the exam and the book can be used for reference (but it is always best practice to memorise!)

C Major Arpeggio

Musical notation for the C Major Arpeggio. The piece is in 4/4 time with a tempo of 70 bpm. The notation consists of a treble clef staff and a guitar TAB staff. The treble staff shows a sequence of notes: C4 (quarter), E4 (quarter), G4 (quarter), A4 (quarter), G4 (quarter), E4 (quarter), and C4 (half). The guitar TAB staff shows the fretting: 0 (open), 0 (open), 3 (third fret), 3 (third fret), 3 (third fret), 0 (open), and 0 (open).

A Minor Arpeggio

Musical notation for the A Minor Arpeggio. The piece is in 4/4 time with a tempo of 70 bpm. The notation consists of a treble clef staff and a guitar TAB staff. The treble staff shows a sequence of notes: A3 (quarter), C4 (quarter), E4 (quarter), F4 (quarter), E4 (quarter), C4 (quarter), and A3 (half). The guitar TAB staff shows the fretting: 0 (open), 3 (third fret), 0 (open), 0 (open), 0 (open), 0 (open), and 0 (open).

Listening Skills

EXAM

As part of the exam you will need to complete two separate ear tests, covering both melodic and harmonic recall.

Melodic Recall

Track 68: Example

You will hear two notes played in succession and have to identify if the second note is higher or lower than the first. A count in will be heard before the test plays and the test will play twice, with a short gap in-between.

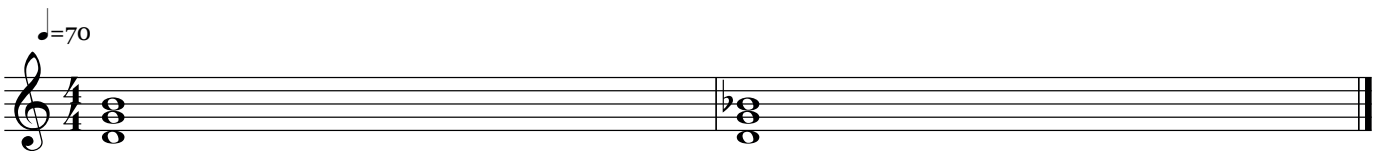


For the above example the answer would be 'lower'.

Harmonic Recall

Track 69: Example

You will hear two chords played in succession, with each being either a Major or a Minor chord. You will need to identify if the second chord is Major or Minor. A count in will be heard before the test plays and the test will play twice, with a short gap in-between.



For the above example the answer would be 'Minor'.

Sight Reading

EXAM

As part of the exam you will need to sight read a short 4 bar passage of music. The test will only use open strings on the A, E and C strings and each note will be played as a Whole Note. You will have 20 seconds to practise the test with a click track before playing the test to the examiner using the backing track.

Track 70: Click Track
Track 71: Backing Track

♩ = 70

4/4

4

General Musicianship

EXAM

This section of the exam tests your knowledge of your instrument and music theory. You will be asked four questions, picked by the examiner from the pool of information below.

Music Theory

Using one of the songs you have performed in the exam the examiner will ask you questions from the following:

- The Treble Clef
- Alternate Picking – recognition of downward and upward pick notation
- Recognition of quarter note and half note
- Recognition of quarter note rest
- The difference between Major and Minor chords

Instrument Knowledge

Using one of the songs you have performed in the exam the examiner will ask you questions from the following:

- Parts of the Ukulele
- The 4 string names of the Ukulele
- Where the Ukulele was invented

How To Take Your Exam

Our exams are accredited by Online Music Exams (OME) and can be completed online using a PC or Mac. To book your exam, you can purchase access by visiting:

<https://www.onlinemusicexams.org/shop/exams/ukulele-practical-debut>

To find out more information about how to take your exam, please visit:

<https://www.onlinemusicexams.org/faq>